

KEY

- PROPOSED NO WAITING AT ANY TIME
- EXISTING WAITING, LOADING AND PARKING RESTRICTIONS (WITH OR WITHOUT SYMBOLS)

Notes

Rev.	Description	Drwn	Sig.	Date	Chkd	Sig.	Date	Appr	Sig.	Date
A	RESTRICTIONS AMENDED	CAH	CAH	07.17	JAR	JAR	07.17	RH	RH	07.17

Rev.	Description	Drwn	Sig.	Date	Chkd	Sig.	Date	Appr	Sig.	Date
A	RESTRICTIONS AMENDED	CAH	CAH	07.17	JAR	JAR	07.17	RH	RH	07.17

North Point

Based upon the Ordnance Survey mapping with the permission of the Controller of Her Majesty's Stationery Office © Crown copyright. Unauthorised reproduction infringes Crown copyright and may lead to prosecution or civil proceedings. Surrey County Council LA 076872 1996.

Drawn by	CAH	Sig.	CAH	Date	04.16
Checked by	JAR	Sig.	JAR	Date	04.16
Approved by	RH	Sig.	RH	Date	04.16

Project

**RUNNYMEDE DPE
FOXHILLS, THORPE and VIRGINIA WATER DIVISION**

Drawing

**IMPLEMENTED TRAFFIC ORDERS
THORPE**

SHEET OF

Project No. 3282/RUN

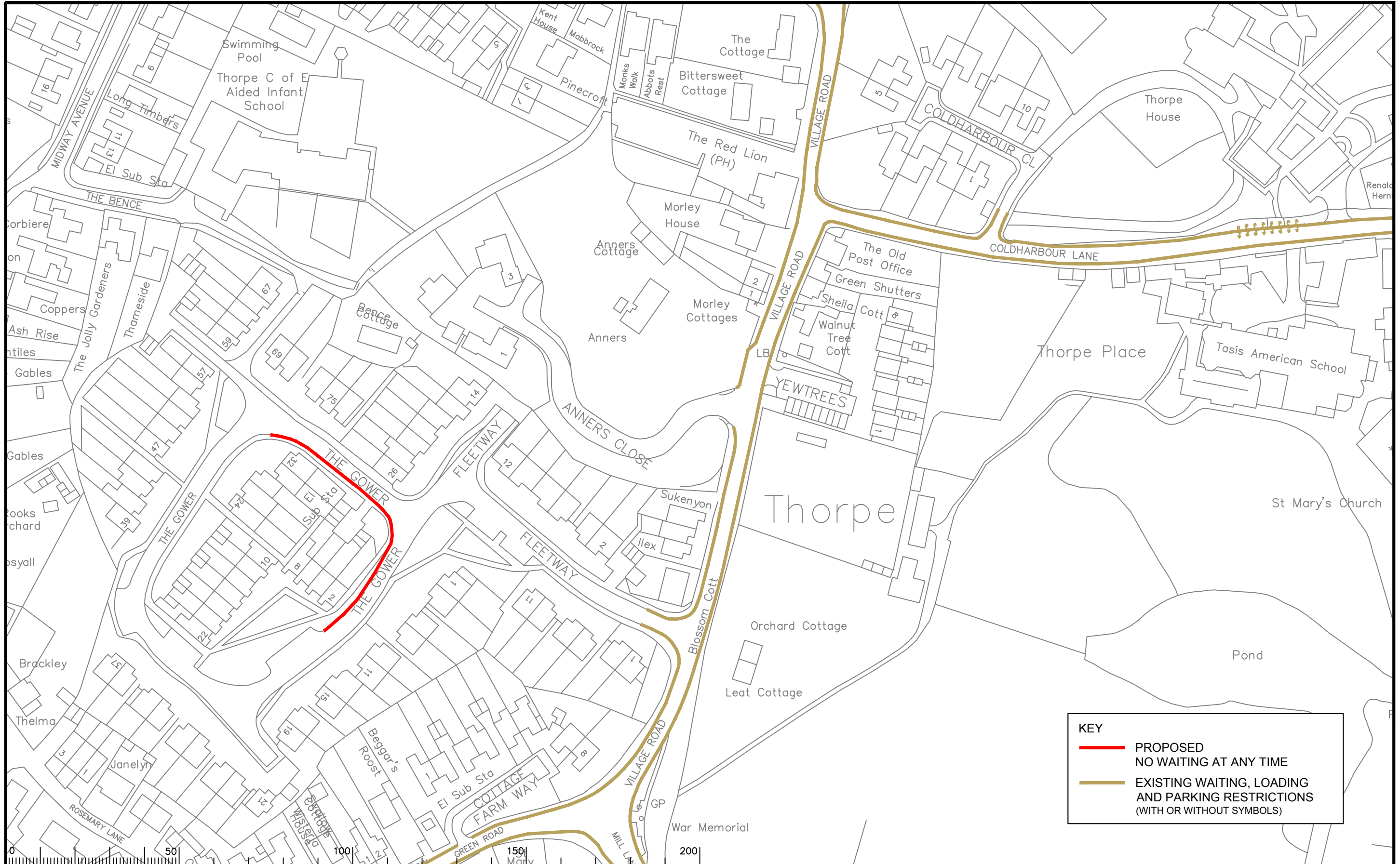
Contract Sheet No.

Drawing No. 3282_25

Rev. A

SURREY COUNTY COUNCIL

Classification: PROPOSAL



KEY

- PROPOSED
NO WAITING AT ANY TIME
- EXISTING WAITING, LOADING
AND PARKING RESTRICTIONS
(WITH OR WITHOUT SYMBOLS)

Notes

Rev.	Description	Drwn	Sig.	Date	Chkd	Sig.	Date	Appr	Sig.	Date
A	RESTRICTIONS AMENDED	CAH	CAH	07.17	JAR	JAR	07.17	RH	RH	07.17

Rev.	Description	Drwn	Sig.	Date	Chkd	Sig.	Date	Appr	Sig.	Date
A	RESTRICTIONS AMENDED	CAH	CAH	07.17	JAR	JAR	07.17	RH	RH	07.17

North Point

Based upon the Ordnance Survey mapping with the permission of the Controller of Her Majesty's Stationery Office. Crown copyright. Unauthorised reproduction infringes Crown copyright and may lead to prosecution or civil proceedings. Surrey County Council LA 076872 1996.

Drawn by	CAH	Sig.	CAH	Date	04.16
Checked by	JAR	Sig.	JAR	Date	04.16
Approved by	RH	Sig.	RH	Date	04.16

Project
RUNNYMEDE DPE
FOXHILLS, THORPE and VIRGINIA WATER DIVISION

Drawing
IMPLEMENTED TRAFFIC ORDERS
THORPE

SHEET OF

Project No.
3282/RUN

Contract Sheet No.

Drawing No.
3282_27

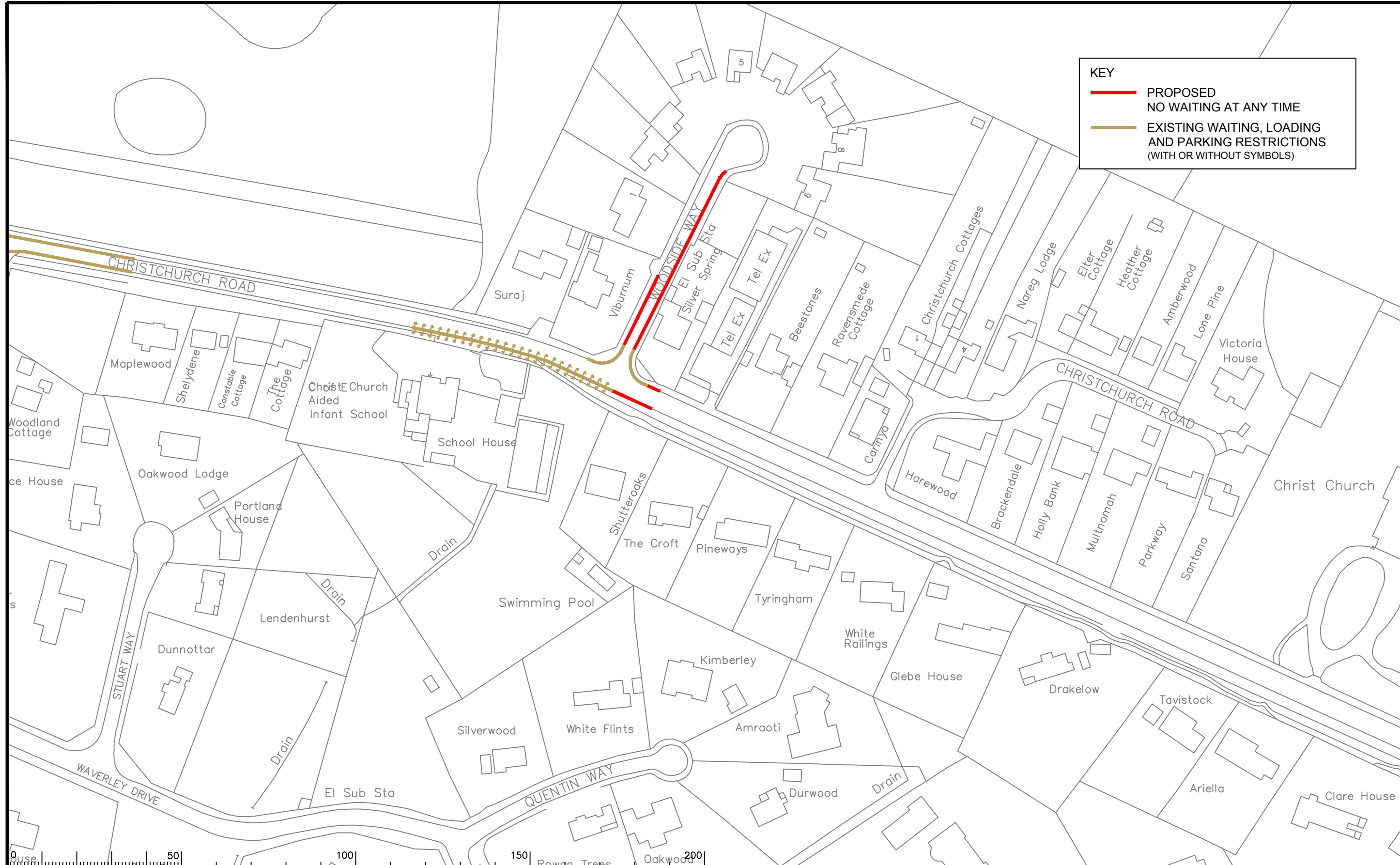
Rev.
A

SURREY COUNTY COUNCIL

Classification
PROPOSAL

KEY

- PROPOSED NO WAITING AT ANY TIME
- EXISTING WAITING, LOADING AND PARKING RESTRICTIONS (WITH OR WITHOUT SYMBOLS)



Notes

Rev.	Description	Drwn	Sig.	Date	Chkd	Sig.	Date	Appr	Sig.	Date
A	RESTRICTIONS AMENDED	CAH	CAH	07.17	JAR	JAR	07.17	RH	RH	07.17

Rev.	Description	Drwn	Sig.	Date	Chkd	Sig.	Date	Appr	Sig.	Date
A	RESTRICTIONS AMENDED	CAH	CAH	07.17	JAR	JAR	07.17	RH	RH	07.17

North Point

Based upon the Ordnance Survey mapping with the permission of the Controller of Her Majesty's Stationery Office. Crown copyright. Unauthorised reproduction infringes Crown copyright and may lead to prosecution or civil proceedings. Surrey County Council LA 076872 1996.

Drawn by	CAH	Sig.	CAH	Date	04.16
Checked by	JAR	Sig.	JAR	Date	04.16
Approved by	RH	Sig.	RH	Date	04.16

Project

**RUNNYMEDE DPE
FOXHILLS, THORPE and VIRGINIA WATER DIVISION**

Drawing

**IMPLEMENTED TRAFFIC ORDERS
VIRGINIA WATER**

SHEET OF

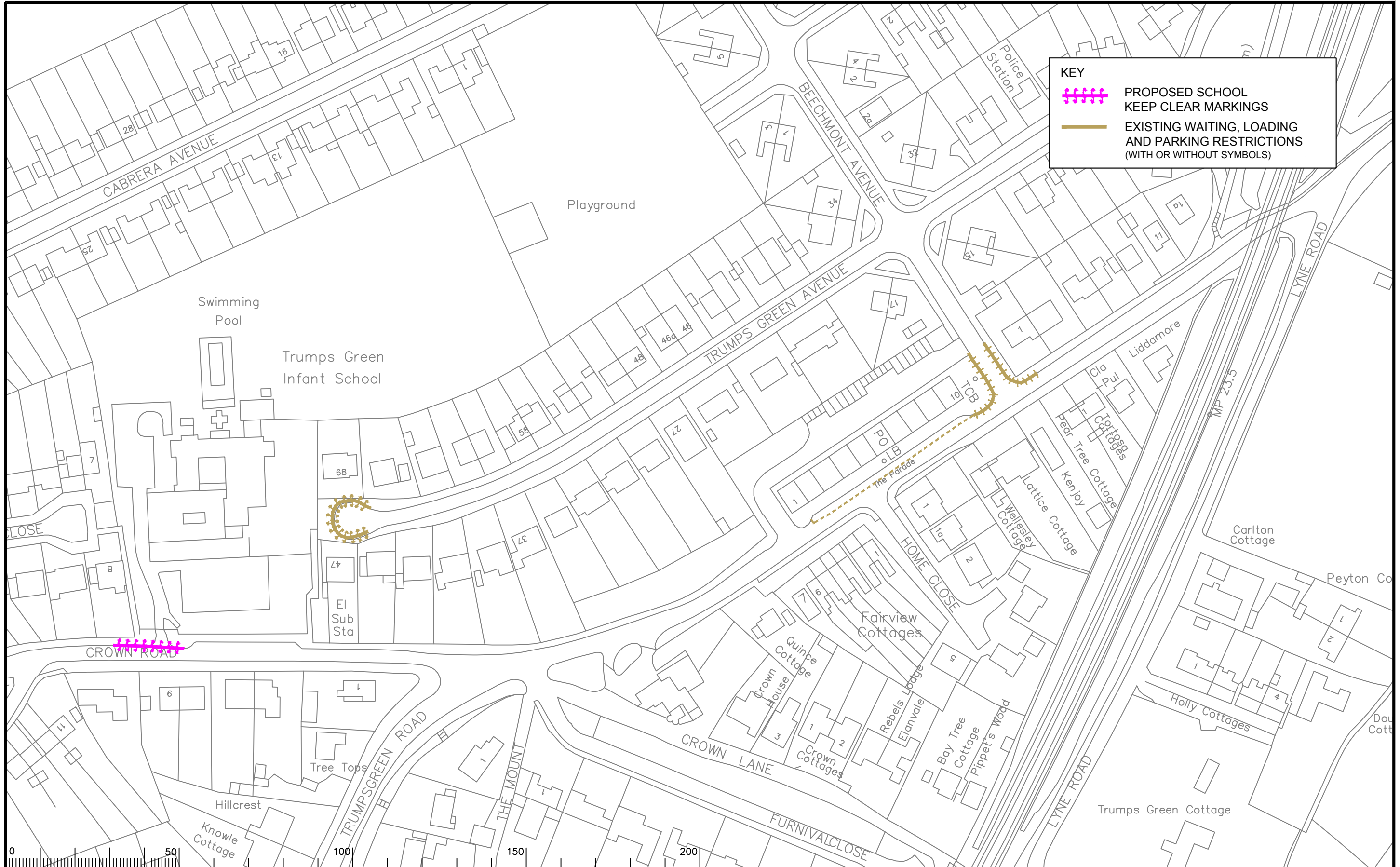
Project No.
3282/RUN

Contract Sheet No.

Drawing No.
3282_30

Rev.
A

Classification
PROPOSAL



Notes

0 50 100 150 200

Rev.	Description	Drwn	Sig.	Date	Chkd	Sig.	Date	Appr	Sig.	Date
A	RESTRICTIONS AMENDED	CAH	CAH	07.17	JAR	JAR	07.17	RH	RH	07.17

North Point

Based upon the Ordnance Survey mapping with the permission of the Controller of Her Majesty's Stationery Office. Crown copyright. Unauthorised reproduction infringes Crown copyright and may lead to prosecution or civil proceedings. Surrey County Council LA 076872 1996.

Drawn by	Sig.	Date
CAH	CAH	04.16
Checked by	Sig.	Date
JAR	JAR	04.16
Approved by	Sig.	Date
RH	RH	04.16

Project
RUNNYMEDE DPE
FOXHILLS, THORPE and VIRGINIA WATER DIVISION

Drawing
IMPLEMENTED TRAFFIC ORDERS
VIRGINIA WATER

SHEET OF

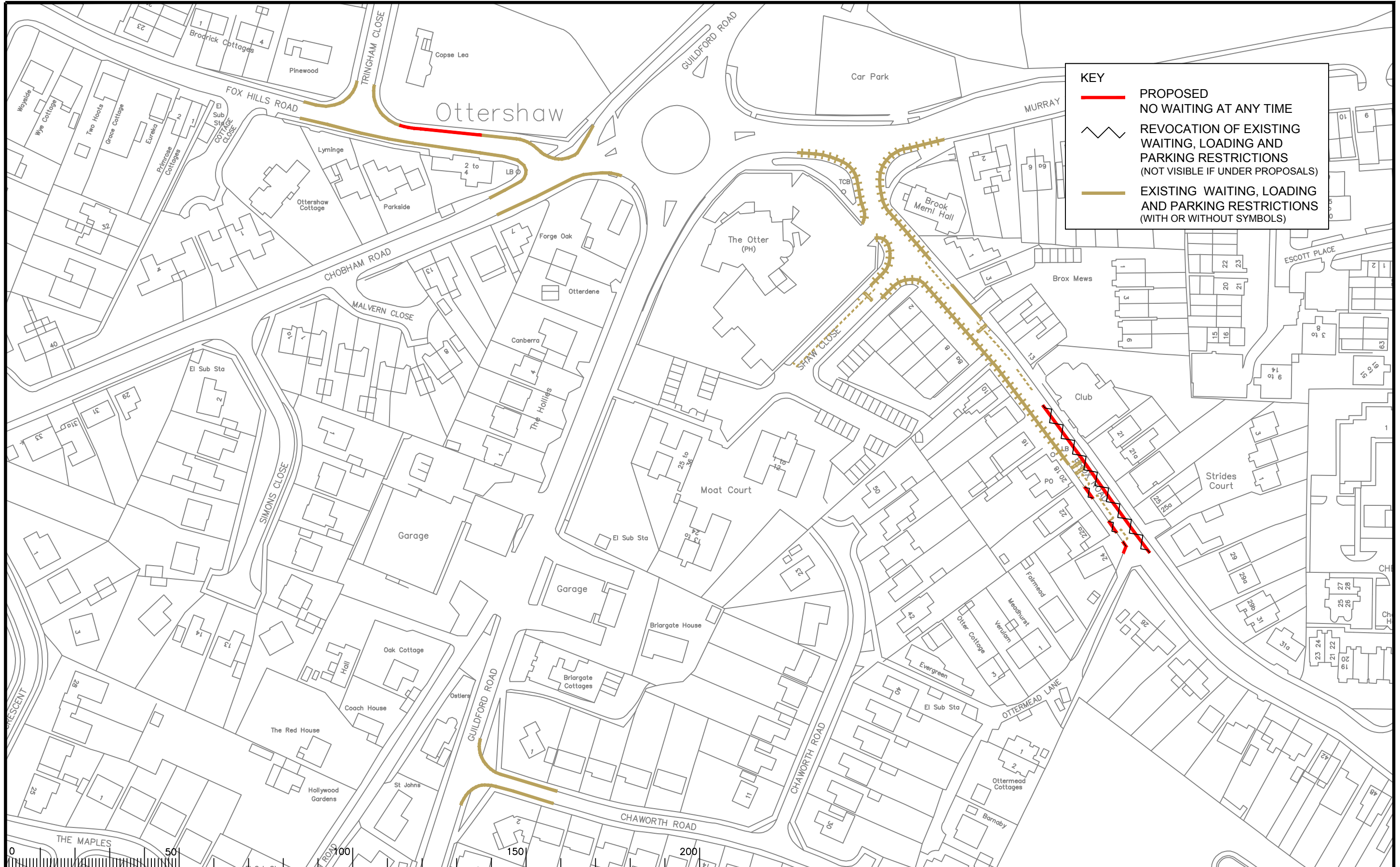
Project No. 3282/RUN

Contract Sheet No.

Drawing No. 3282_33

Rev. A

Classification: PROPOSAL



KEY

- PROPOSED NO WAITING AT ANY TIME
- EXISTING WAITING, LOADING AND PARKING RESTRICTIONS (WITH OR WITHOUT SYMBOLS)
- ~ REVOCAION OF EXISTING WAITING, LOADING AND PARKING RESTRICTIONS (NOT VISIBLE IF UNDER PROPOSALS)

Notes

Rev.	Description	Drwn	Sig.	Date	Chkd	Sig.	Date	Appr	Sig.	Date
A	RESTRICTIONS AMENDED	CAH	CAH	02.16	JAR	JAR	02.16	RH	RH	02.16
B	RESTRICTIONS AMENDED	CAH	CAH	07.17	JAR	JAR	07.17	RH	RH	07.17

North Point

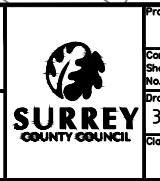
Based upon the Ordnance Survey mapping with the permission of the Controller of Her Majesty's Stationery Office © Crown copyright. Unauthorised reproduction infringes Crown copyright and may lead to prosecution or civil proceedings.
Surrey County Council LA 076872 1996.

Drawn by: CAH, Sig. CAH, Date 07.14
Checked by: JAR, Sig. JAR, Date 07.14
Approved by: RH, Sig. RH, Date 07.14

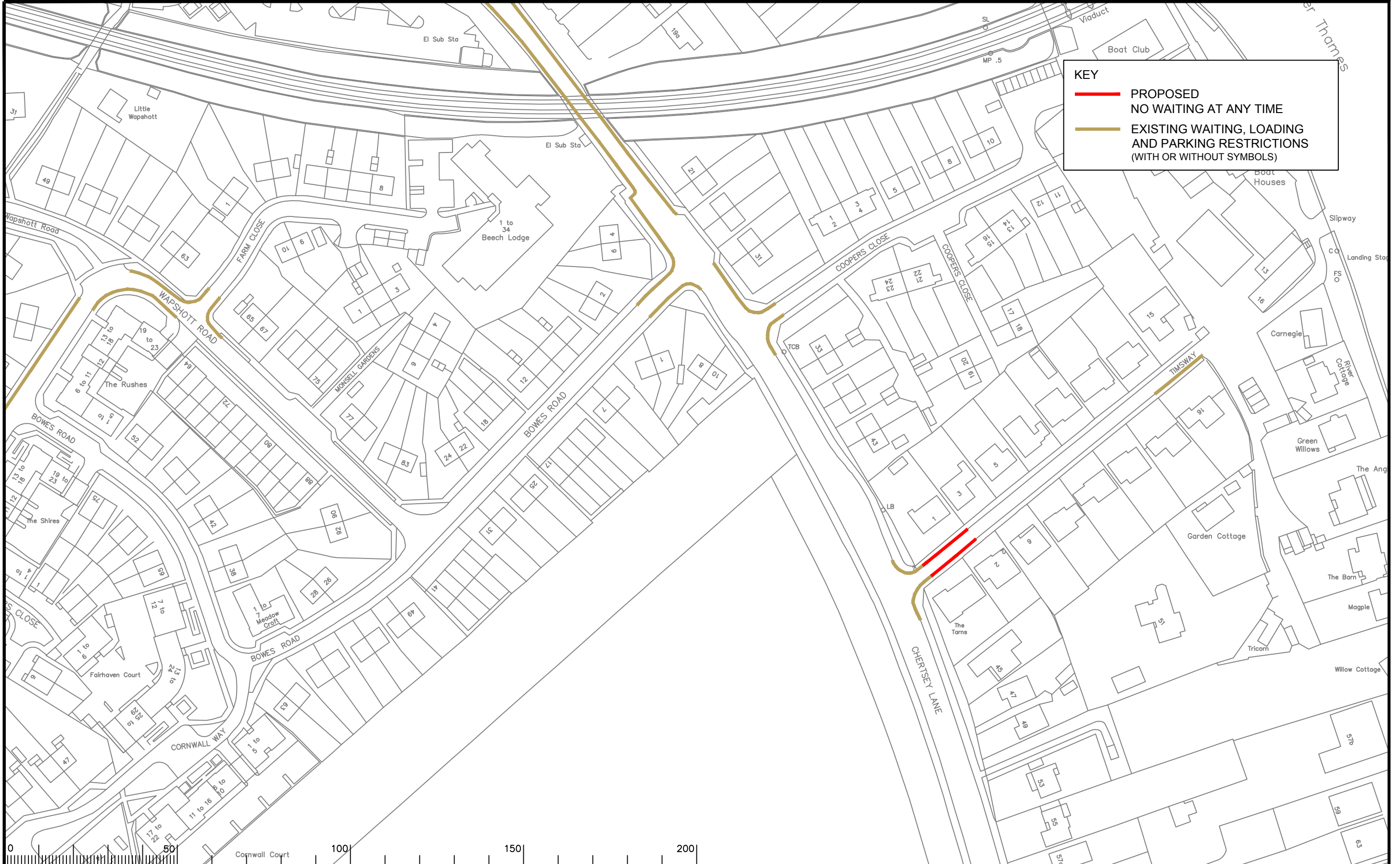
Project: RUNNYMEDE DPE
FOXHILL, THORPE AND VIRGINIA WATER DIVISION

Drawing: IMPLEMENTED TRAFFIC ORDERS
OTTERSASHAW

SHEET OF



Project No. 3282
Contract Sheet No. 3282_63
Drawing No. 3282_63
Rev. B
Classification: PROPOSAL



KEY

— PROPOSED
NO WAITING AT ANY TIME

— EXISTING WAITING, LOADING
AND PARKING RESTRICTIONS
(WITH OR WITHOUT SYMBOLS)

Page 82

Notes

Rev.	Description	Drwn	Sig.	Date	Chkd	Sig.	Date	Appr	Sig.	Date
A	RESTRICTIONS AMENDED	CAH	CAH	07.17	JAR	JAR	07.17	RH	RH	07.17



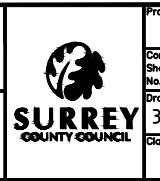
Based upon the Ordnance Survey mapping with the permission of the Controller of Her Majesty's Stationery Office. Crown copyright. Unauthorised reproduction infringes Crown copyright and may lead to prosecution or civil proceedings. Surrey County Council LA 070872 1996.

Drawn by: CAH Sig. CAH Date 04.16
 Checked by: JAR Sig. JAR Date 04.16
 Approved by: RH Sig. RH Date 04.16

Project
RUNNYMEDE DPE
 EGHAM DIVISION and FOXHILLS, THORPE and VIRGINIA WATER DIVISION

Drawing
IMPLEMENTED TRAFFIC ORDERS
 EGHAM HYTHE

SHEET OF

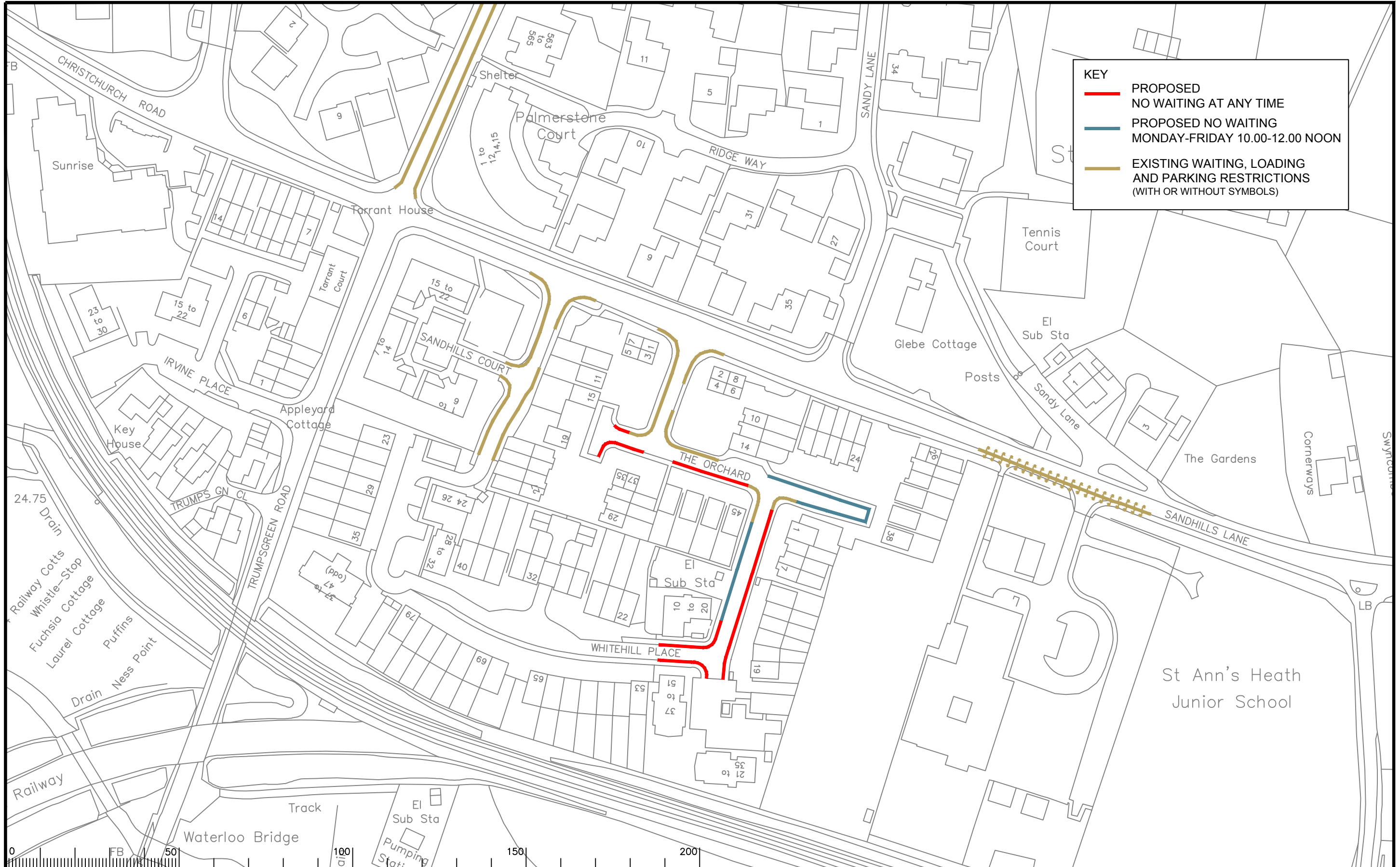


Project No.
3282/RUN

Contract Sheet No.
3282_73

Rev.
A

Classification
PROPOSAL



KEY

- PROPOSED NO WAITING AT ANY TIME
- PROPOSED NO WAITING MONDAY-FRIDAY 10.00-12.00 NOON
- EXISTING WAITING, LOADING AND PARKING RESTRICTIONS (WITH OR WITHOUT SYMBOLS)

Notes

Rev.	Description	Drwn	Sig.	Date	Chkd	Sig.	Date	Appr	Sig.	Date

Rev.	Description	Drwn	Sig.	Date	Chkd	Sig.	Date	Appr	Sig.	Date

North Point

Based upon the Ordnance Survey mapping with the permission of the Controller of Her Majesty's Stationery Office. Crown copyright. Unauthorised reproduction infringes Crown copyright and may lead to prosecution or civil proceedings. Surrey County Council LA 076872 1996.

Drawn by	Sig.	Date
CAH	CAH	06.17
Checked by	Sig.	Date
JAR	JAR	06.17
Approved by	Sig.	Date
RH	RH	06.17

Project
RUNNYMEDE DPE
FOXHILL, THORPE AND VIRGINIA WATER DIVISION

Drawing
IMPLEMENTED TRAFFIC ORDERS
VIRGINIA WATER

SHEET OF

Project No. 3282
 Contract Sheet No. 3282_99
 Drawing No. 3282_99
 Classification AS MADE

This page is intentionally left blank